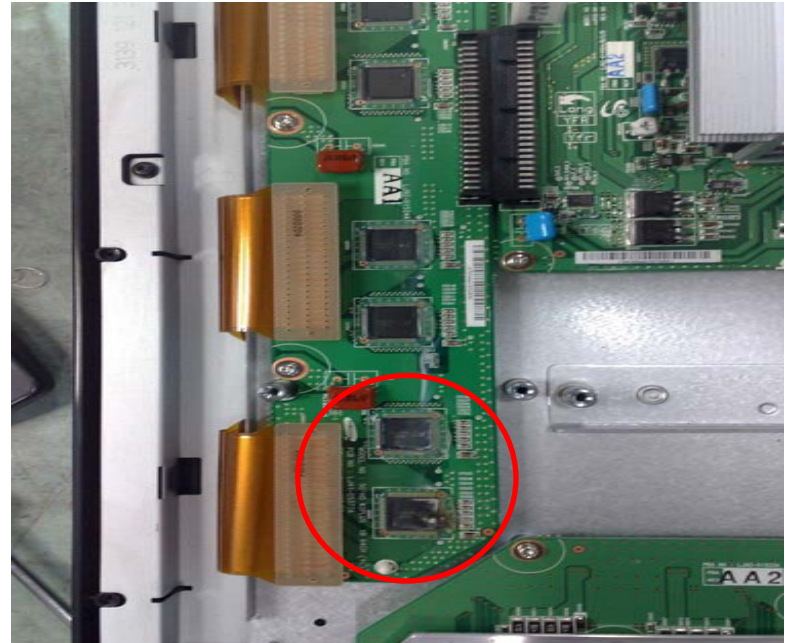
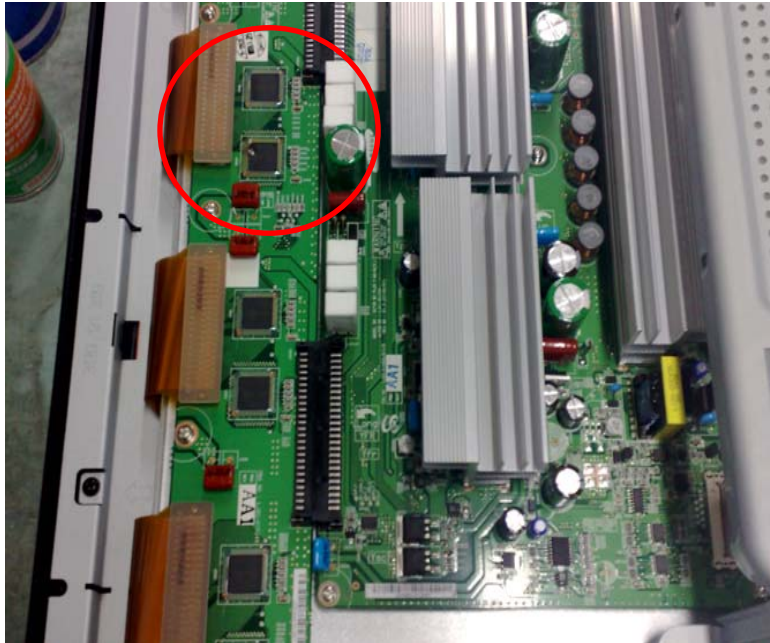


Service instruction

Y-buffer Repair Process (SDI 50"HD W2P/S50HW-YD07)

Service Instruction

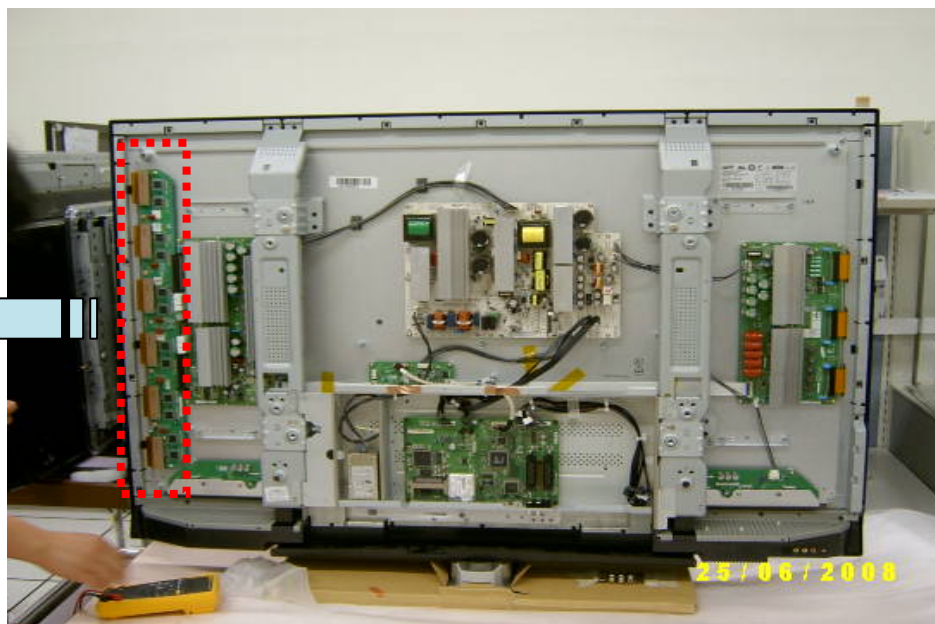
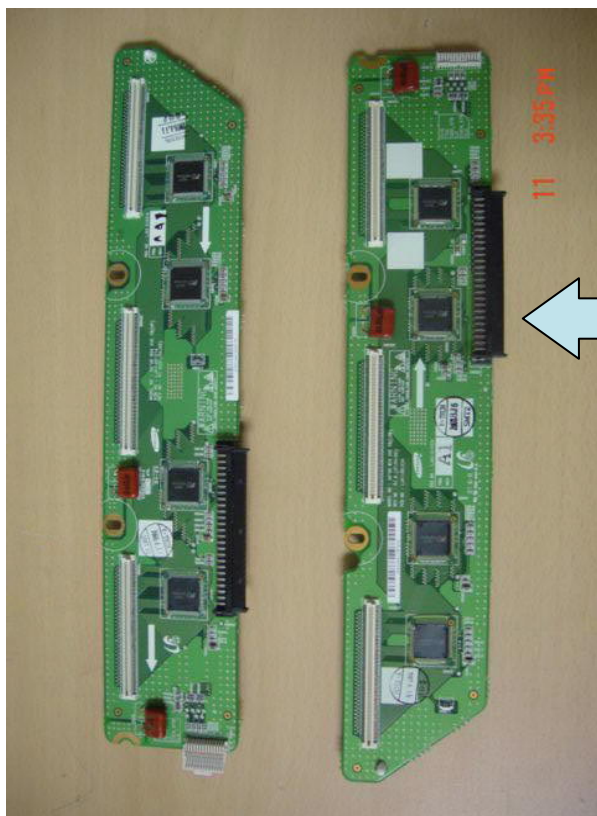
- 1) Model: 50"HD W2P/YD07
- 2) Defect: Y-buffer
- 3) Problem Description: No picture on the screen. It was found that the Y-buffer has been damaged.



Service Instruction how to mount new Y-buffer(s)

1) New Y-buffer:

Y-buffer must be changed to a new Y-buffer [Y-buffer (up) & Y-buffer (down)] as the left picture below shows:



Identification:

Up:

LJ92-01491A

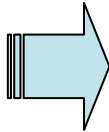
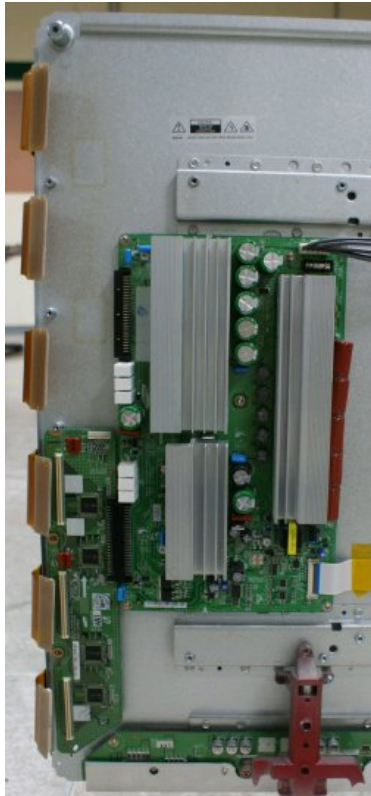
Down:

LJ92-01492A

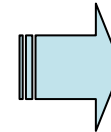
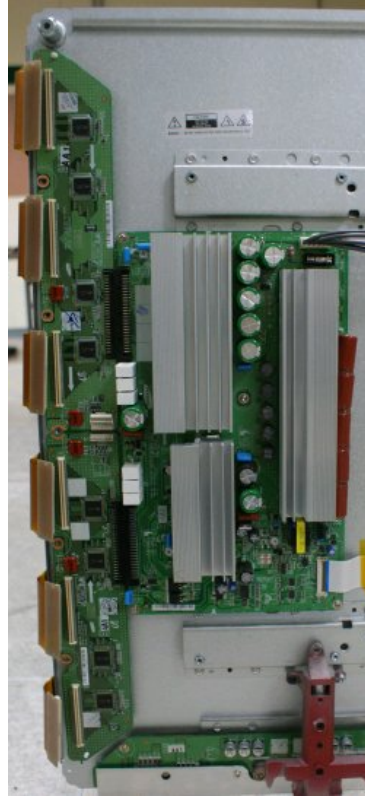
Service Instruction how to mount new Y-buffer(s)

2) Repair instruction:

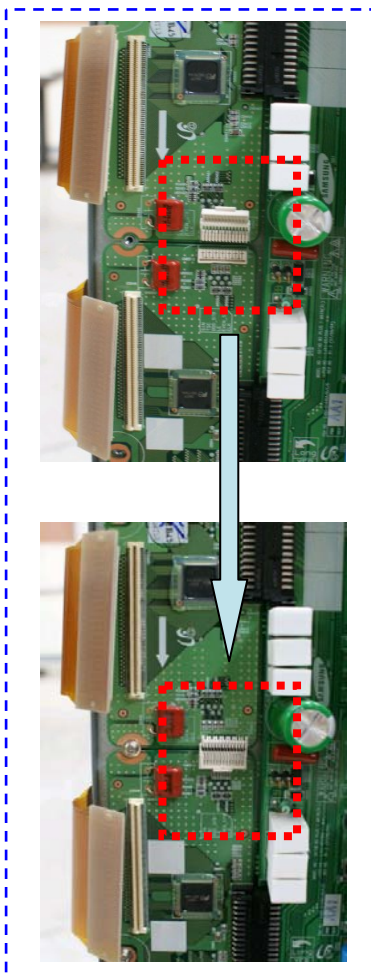
① **Connect Y-buffer (down)
with Y-Main.**



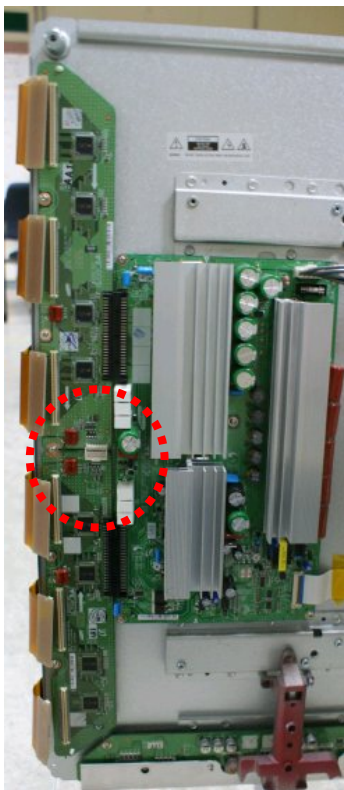
② **Connect Y-buffer (up)
with Y-Main.**



Service Instruction how to mount new Y-buffer(s)



③ Screw down Y-buffer and connect CN5412 with CN5512.



④ Connect Y-FPC with Y-buffer.

