

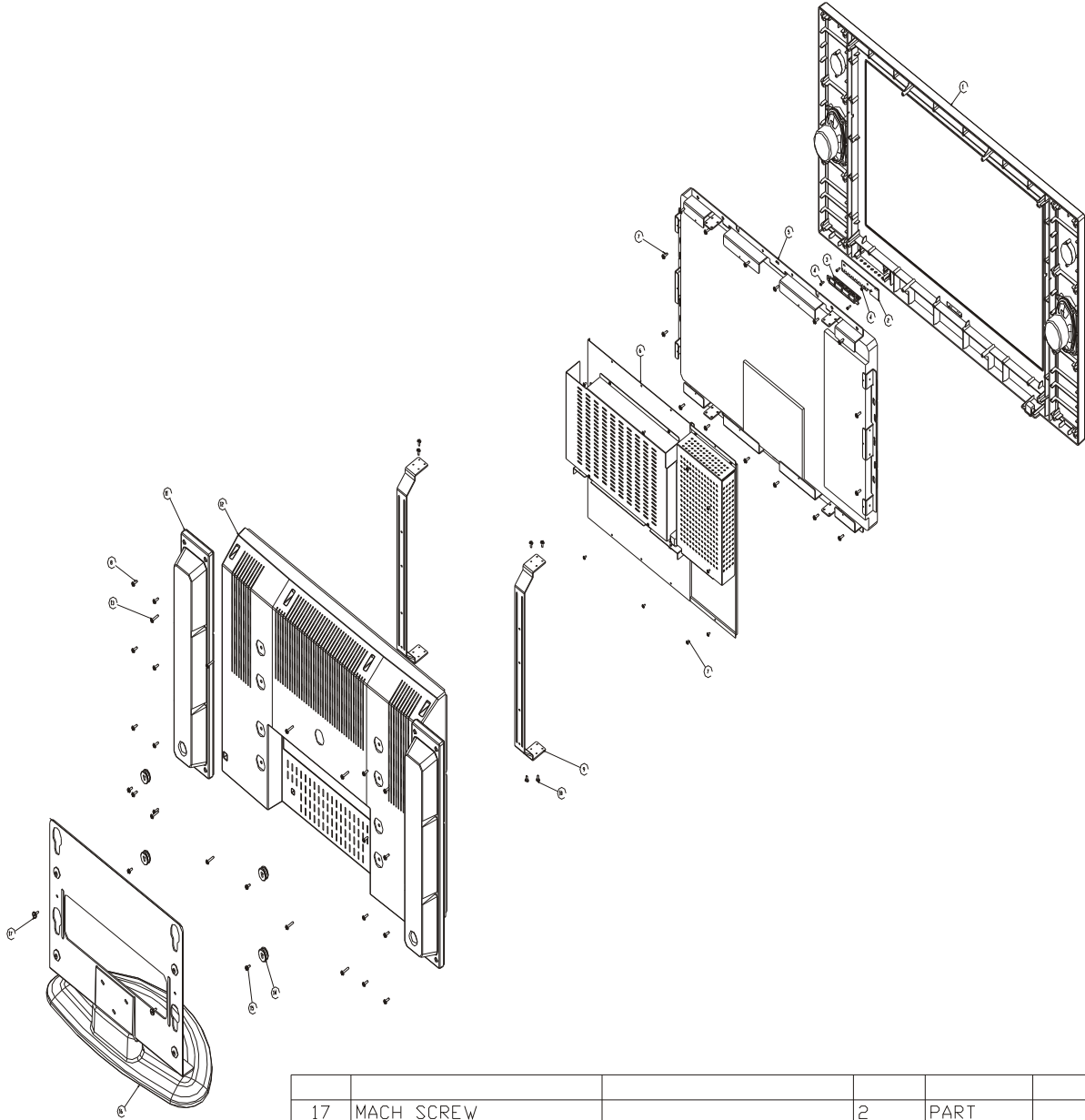
AKAI

PARTS AND EXPLODED VIEWS

Model: **LCT2662**



Exploded View Diagram



17	MACH SCREW		2	PART	
16	SEAT_ASS		1	ASSEMBLY	
-	СПКЕТ_PVC_PLATE		1	PART	
15	MACH SCREW		4	PART	
14	BKT_1		4	PART	
13	SELF TAPPING SCREW		8	PART	
12	BACK_CAB_26_1		1	PART	
11	SPK_ВПХ_В1		2	PART	
10	MACH SCREW		8	PART	
9	MTG_BKT_26_2		2	PART	
8	SELF TAPPING SCREW		32	PART	
7	MACH SCREW		9	PART	
6	MAIN_PCB_MTG_ASS_2		1	ASSEMBLY	
5	27PANEL_ASS		1	ASSEMBLY	
4	SELF TAPPING SCREW		4	PART	
3	F_KEY_L26_1		1	PART	
2	KEY_PCB_ASS_26_1		1	ASSEMBLY	
1	FRONT_CAB_ASS_LC27		1	ASSEMBLY	
ITEM	DESCRIPTION	PART NP	QTY.	TYPE	REMARK

SPARE PART LIST

LC26HABCUSXM1-A01

AKAI

MICO

USA

LCT2662(FULL PIP)

Item	Component	Description/Country Origin	Unit	Quantity
一, ELECT PART				
1	E1301-041090	CAPACITOR EC V A SAIL 100M 16DC T05	PCS	1
2	E1501-001001	RESISTOR CBF H 1/6W 100J T52	PCS	1
3	E1501-001004	RESISTOR CBF H 1/6W 103J T52	PCS	7
4	E2509-094001	DIODE LED A D3.0 GR/RD (LT036	PCS	1
5	E2701-023002	DETECTOR IR AT138A	PCS	1
6	E3101-171001	PLUG V HX2007(PH)-12A P2.0 12P WHT	PCS	1
7	E3204-023001	SOCKET AC HF-301 FOR 26LA	PCS	1
8	E3403-001001	TUBE SHRINKABLE D30.0 BLK 600V	M	0.04
9	E3403-004001	TUBE SUMITUBE D5.0 BLK 600V	M	0.105
10	E3403-005001	TUBE SHRINKABLE D20.0 BLK	M	0.03
11	E3421-229007	WIRE ASSY 1H3.96-2KN3 0N2 L400 CJ	PCS	1
12	E3421-925029	WIRE ASSY PH2.0-12Y/12Y L=550MM KEY	PCS	1
13	E3421-925030	WIRE ASSY PH2.0-8Y/8Y 5V/12V L=220	PCS	1
14	E3421-925031	WIRE ASSY PH2.0-5Y/5Y L=250MM 5VSB	PCS	1
15	E3421-925032	WIRE ASSY PH2.0-4Y/4Y L=450MM AMP2	PCS	1
16	E3421-925033	WIRE ASSY PH2.0-12Y/12Y L=250MM IN	PCS	1
17	E3421-925034	WIRE ASSY PH2.0-10Y/10Y L=250MM INV	PCS	1
18	E3421-925035	WIRE ASSY PH2.0-4Y/4Y L=100MM AUDI	PCS	1
19	E3421-925036	WIRE ASSY PH2.0-12Y/12Y L=280MM TU	PCS	1
20	E3421-925037	WIRE ASSY TTJC3-2Y L=450MM SPK-R	PCS	1
21	E3421-925038	WIRE ASSY TJC3-2Y L=850MM SPK-L	PCS	1
22	E3421-925039	WIRE ASSY LVDS L=300MM 30P/30P	PCS	1
23	E3421-925040	WIRE ASSY TJC3-6Y/6Y L=350MM POWER	PCS	1
24	E3421-941001	WIRE ASSY 1KN5-2TKN0 45 L110 BJ	PCS	1
25	E3451-000406	WIRE WD 1672#20 RED L=250MM	PCS	1
26	E3451-000407	WIRE WD 1672#20 BLACK L=250MM	PCS	1
27	E3731-052020	PCB KEY V0 124.5X20.5MM W 1.6MM 2 LA	PCS	1
28	E4101-027001	SWITCH POW MR-22-N2BB-F2 ROCKET	PCS	1
29	E4102-044001	SWITCH TACT H 6*6*5W	PCS	7
30	E4801-123001	SPEAKER 8 OHM 10W D2.5X4" YDT711 (SG	PCS	2
31	E6203-024001	DISPLAY LCD 27" V270W1-L03	PCS	1
32	E7802-004001	PCB ASSY MAIN BOARD FOR 27" LCD MICO	SET	1
33	E7802-004002	PCB ASSY POWER200 BOARD FOR 27" LCD	SET	1
34	E7802-004003	PCB ASSY TUNER AMP BOARD FOR 27" LCD	SET	1
二, MECH PART				
1	200-26LA21-03AV	CABINET FRONT SIL (L/S-01) + BLK (SA	PCS	1
2	202-26LA11-01AV	BACK CABINET 26LA A (470+70%)	PCS	1
3	206-26LA01-01PV	THE BACK COVER SPEAKER 26LA P (470	PCS	2
4	230-26LA11-01RV	STAND COVER 26LA R (470+70%)	PCS	1
5	269-290803-01S	POWER LENS (D) 2908	PCS	1
6	269-290804-01L	SENSOR LENS (D) 2908	PCS	1
7	277-26LA01-01S	FUNCTION KNOB 26LA	PCS	1
8	361-101261-01	CABLE TIE	PCS	5

9	370-42D101-01	RUBBER FOOT 20X20X7.0MM 42D1	PCS	4
10	379-972501-01Y	SPECIAL RUBBER PARTS SPK 9725	PCS	8
11	379-972502-01Y	SPECIAL RUBBER PARTS 9725	PCS	8
12	388-L27AB01-01H	POWER PLATE AKAI LC26HAB H	PCS	1
13	389-26LA01-05H	PVC PLATE AKAI FOR TERMINAL SHEET LC	PCS	1
14	389-26LA02-01H	OTHER PVC PLATE 26LA	PCS	2
15	389-27LA01-01H	PVC SHEET FOR BACK CABINET GATE	PCS	1
16	423-27LA07-01	STAND SUPPORT PLATE SPCC 27LA	PCS	1
17	423-27LA08-01	METAL PLATE FOR STAND SUPPORT PLATE	PCS	1
18	423-27LA09-01	METAL PLATE FOR WALL BRACKET 27LA	PCS	2
19	426-27LA11-01	SUPPORT BRACKET FOR POWER JACK 27LA	PCS	1
20	428-27LA11-01	MAIN METAL PLATE FOR PANEL 27LA	PCS	1
21	436-27LA01-01	BACK TERMINAL SHEET 27LA	PCS	1
22	449-27LA01-01	METAL PLATE FOR STAND BASE	PCS	1
23	481-27LA01-01	SHIELD COVER FOR MAIN PCB 27LA TINPL	PCS	1
24	481-27LA02-01	SHIELD COVER FOR POWER PCB 27LA TINP	PCS	1
25	486-M32111-01	NAME PLATE M AKAI	PCS	1
26	521-100105-01	FELT PAPER 100X10X0.5	PCS	10
27	521-150105-01	FELT PAPER 150X10X0.5	PCS	25
28	563-119-	SERIAL NO. LABEL	PCS	1
29	579-LC2701-02	UPC LABEL (50X23MM) OF UNIT LCT2716	PCS	1
30	579-LC2702-02	UPC LABEL OF G/B LCT2716	PCS	2
31	580-L26AB01-03	IB E FOR AKAI LC26HAB USA MICO	PCS	1
32	590-LC2701-02	WARRANTY CARD AKAI LCT2716 216X279	PCS	1
33	590-LC2701-03	INSERTION CARD AKAI LC26HAB	PCS	1
34	601-305008-00	MACH.SCREW CTS 3X8 BZN +	PCS	3
35	601-305010-00	MACH.SCREW CTS 3X10 BZN +	PCS	5
36	602-305004-10	MACH. SCREW PAN-WASHER M3X4 NIP +H	PCS	30
37	602-305008-10	MACH.SCREW WHR 3X8 NIP +	PCS	12
38	604-305022-00	MACH. SCREW BINDING M3X22MM B ZNP +H	PCS	2
39	604-508022-00	MACH. SCREW BINDING M5X22MM B ZNP +H	PCS	8
1	610-300210-10	TS RBD3X10 A NIP +H	PCS	11
2	614-300108-10	S-TAP SCREW BID 3.0X8	PCS	4
3	614-400412-10	S-TAP.SCREW BID 4X12 D NIP +	PCS	40
4	614-400420-10	S-TAP.SCREW BID 4X20 T NIP +	PCS	8
5	615-400414-10	S-TAP.SCREW BWH 4X14 T NIP +	PCS	8
6	802-005005-20	TAPE 2S T4000 5X50M	RLS	0.0198

三, PACKING

1	300-27AB01-02C	POLYFOAM TOP 27AB	PCS	1
2	300-27AB02-02C	POLYFOAM BOTTOM 27AB	PCS	1
3	310-111404-07V	POLYBAG 11"X14"X0.04	PCS	1
4	310-453510-07V	BAG LAMIFILM	PCS	1
5	510-27LA02-02K	GIFT BOX AKAI LCT2716 (MICO) K	PCS	1
7	E3404-157001	AC CORD UL 1.88M MET-4D7+SJT 16AWG/	PCS	1
8	E7301-010002	BATTERY AAA R03P1.5V <2>	PCS	2
9	E7501-051004	REMOTE CRTL FOR 27" USA LCT2716	SET	1